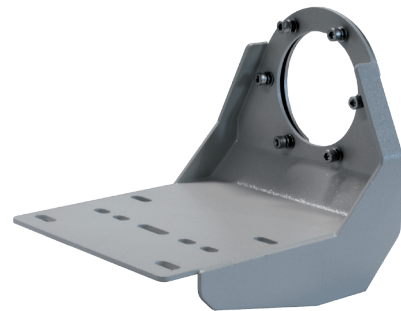


RS-485 PAN AND TILT HEADS

Max Load 50 kg, IP66, (Continuous Rotation Optional)



PT-3002/3002CR



Optional Side-Mount Bracket
Size for camera Housing
122x150mm

Material:

Aluminum die casting

•Color:

Gray corrosive protecting paint

•Motor Type:

DC motor

•Rotating angle: PT-3002

Pan 0-345° ±5%

Max tilt -70° to +30°±5° (-85°~+85°±5° optional)

•Rotating angle: PT-3002CR (Continuous Rotation)

Pan 360° Continuous Rotation

Max tilt -70° to +30°±5° (-85°~+85°±5° optional)

•Joystick operated speed:

Pan 0.1°~ 40°/sec ±0.2°(variable speed)

Tilt 0.1°~ 10°/sec ±0.2°(variable speed)

•Preset operated speed:

Pan 50 or 40 or 35 or 25 or 15 or 6°/sec ±0.2°(selectable speed)

Tilt 20 or 10°/sec ±0.2°(selectable speed)

•Electronic position accuracy:

Pan: 0.033° Tilt: 0.0125°

•Mechanical Lash:

<0.3°

•Load:

Max. 50 kg

•Voltage Supply:

DC24V (AC230V to DC24V PSU included) (AC110V Optional)

•Temperature:

-10°C to +60°C (-25°C to +60°C With optional heater)

•Weight:

19 kg

•Size:

281Lx423Hx244W

•Protection:

IP66

•Electric power:

Max. 60W. Stand by mode 5W

•Baud rate :

2400/4800/9600/19200 bps, N,8,1

•Protocol :

PELCO-D, Absolute position, Position readout

•Receiver function :

PRESETS: 100

AUX1,2,3,4,5 (Washer, IR, Wiper)

Control Motorized zoom lens (ZOOM, FOCUS) (extender control AUX6)

Built-in receiver address setting range from 0~up to 255

RS-485

Communication interface :

All specifications and product descriptions are subject to changes without notice.